

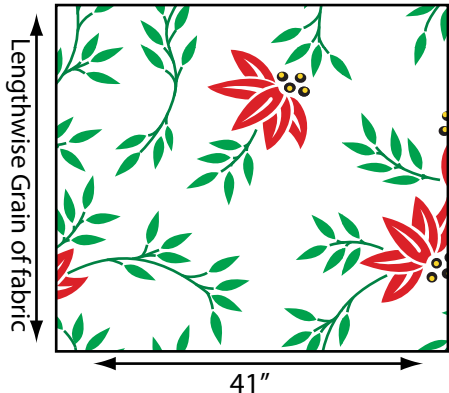
Serger Pillow Case

Fast and easy

Cut:

Pillow Case Body

3/4 of a yard
27" x 41"



Pillow Case Hem
11" x 41"

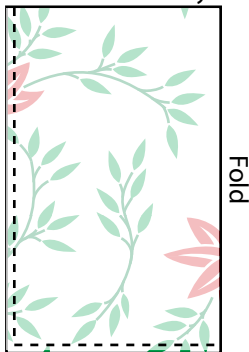


Pillow Case Contrast Trim
3" x 41"



Sew:

Pillow Case Body

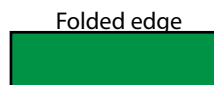


Fold wrong sides together,
Stitch side and bottom.
Use 1/2" seams.
Turn right side out

Pillow Case Hem

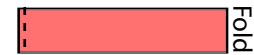


Fold Right sides together.
Stitch side seam.
Use 1/2" seams.
Press seam open.

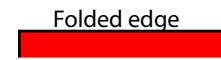


Raw edges
Fold tube Lengthwise
with wrong sides together.

Pillow Case Contrast Trim

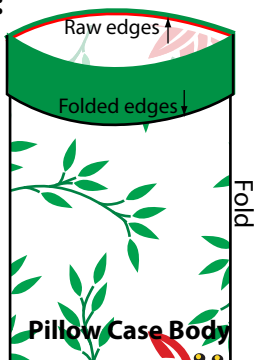


Fold Right sides together.
Stitch side seam.
Use 1/2" seams.
Press seam open.

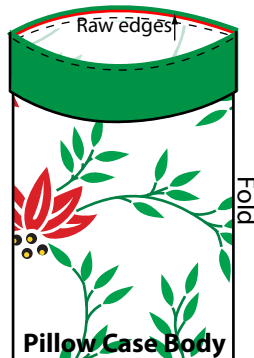


Raw edges
Fold tube Lengthwise
with wrong sides together.

Finish:



Slide the Tubes over the outside
of pillowcase with the contrast
trim piece sandwiched in between
the pillow case body and the pillow
case hem. Raw edges together and
facing out.



You now have a large tube
shape with all the layers pinned
together. Stitch around the tube
catching all the raw edges. Zig-zag
edge or finish with a serger is preferable.



Pull the Case hem out so that
the sewn edge is to the inside.
Press sewn edge to the inside.